

NM Series™ Burner

Selas Nozzle Mix Burners are high turndown, flexible nozzle mix burners for applications up to 2800°F. The NM is designed for furnaces, kilns, ladle heaters, crucible furnaces, incinerators, and process heaters. The stepped tunnel design creates flame turbulence and internal recirculation in the burner. This design produces exceptional flame retention and promotes clean, complete combustion of fuel gases. The ignition of the main flame is smooth and stable in all sizes. NM Burners may be equipped with pilots and supervised by a flame scanner or flame rod. All sizes may be lighted and raised immediately to high fire with excellent flame stability. Each burner has an integral mounting flange for pressurized firing up to psig furnace pressure (consult factory). Burners may be equipped with an optional gas balancing adjuster for multiple burner installations. NM burners couple well with POP orifice meters and BZR fuel control regulators.

NM Burner Capacity

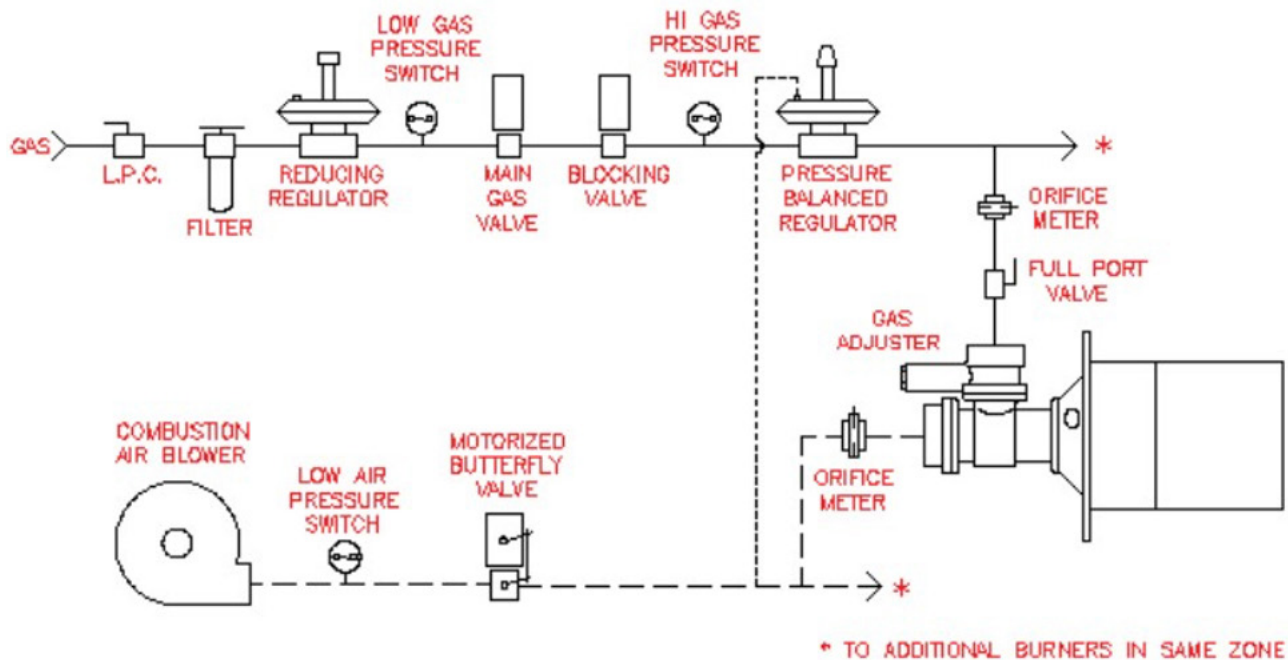
Model Number	Air Pipe Size	Gas Pipe Size	Maximum Capacity in 1000's BTU/hr at Various Air & Gas Pressures (at Burner) ¹								Flame Length
			½ oz.	1 oz.	2 oz.	4 oz. ²	5 oz.	6 oz.	8 oz.	10 oz.	
101NM	¾"	3/8"	35	50	70	100	112	122	140	158	6"
201NM	1-1/4"	¾"	71	100	141	200	224	245	283	316	8"
301NM	1-1/2"	1"	105	150	210	300	336	368	420	475	8"
601NM	2"	1-1/4"	210	300	420	600	670	735	840	950	10"
1001NM	3"	1-1/4"	350	500	700	1000	1120	1220	1400	1580	12"
1501NM	3"	1-1/2"	570	750	1000	1500	1700	1850	2100	2400	24"
2501NM	4"	2-1/2"	880	1250	1770	2500	2800	3060	3540	3950	30"
4001NM	6"	3"	1400	2000	2800	4000	4480	4900	5600	6320	4'
6001NM	8"	3"	2100	3000	4200	6000	6700	7350	8400	9500	6"
8001NM	8"	3"	2825	4000	5650	6930	8000	9800	-	-	8'
2002NM	4"	2 @ 1-1/4"	700	1000	1400	1730	2000	2450	2800	3160	12"
4004NM	6"	4 @ 1-1/4"	1400	2000	2800	3460	4000	4900	5600	6320	12"

Model Number	Air Pipe Size	Gas Pipe Size	Maximum Capacity in 1000's BTU/hr at Various Air & Gas Pressures (at Burner) ¹									Flame Length
			½ oz.	1 oz.	2 oz.	3 oz.	4 oz. ²	5 oz.	6 oz.	8 oz.	10 oz.	
6006NM	8"	6 @ 1-1/4"	2100	3000	4200	5200	6000	6700	7350	8400	9500	12"
10004NM	10"	4 @ 2-1/2"	3500	5000	7000	8700	10000	11200	12200	14000	15800	30"
12002NM	10"	2 @ 3"	4250	6000	8500	10400	12000	13400	14700	17000	19000	6'
16002NM	10"	2 @ 3"	5650	8000	11300	13850	16000	17900	19600	-	-	8'
18003NM	12"	3 @ 3"	6350	9000	12700	15600	18000	20100	22000	25400	28500	6'
24003NM	12"	3 @ 3"	8500	12000	17000	20800	24000	26800	29700	-	-	8'
32004NM	14"	4 @ 3"	11300	16000	22600	27700	32000	35800	39200	-	-	8'
48006NM	20"	6 @ 3"	17000	24000	34000	41600	48000	53700	58800	-	-	8'

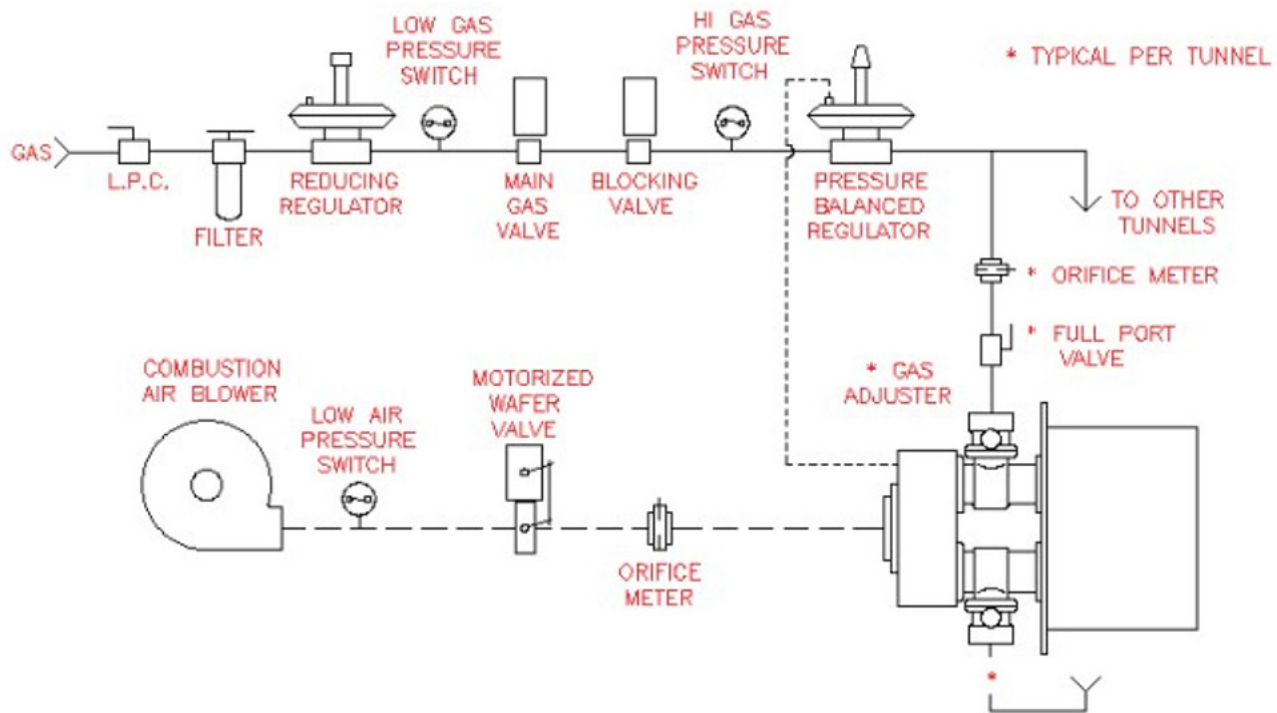


NM Nozzle-Mix Burner

Burners Nozzle Mix Single Tunnel

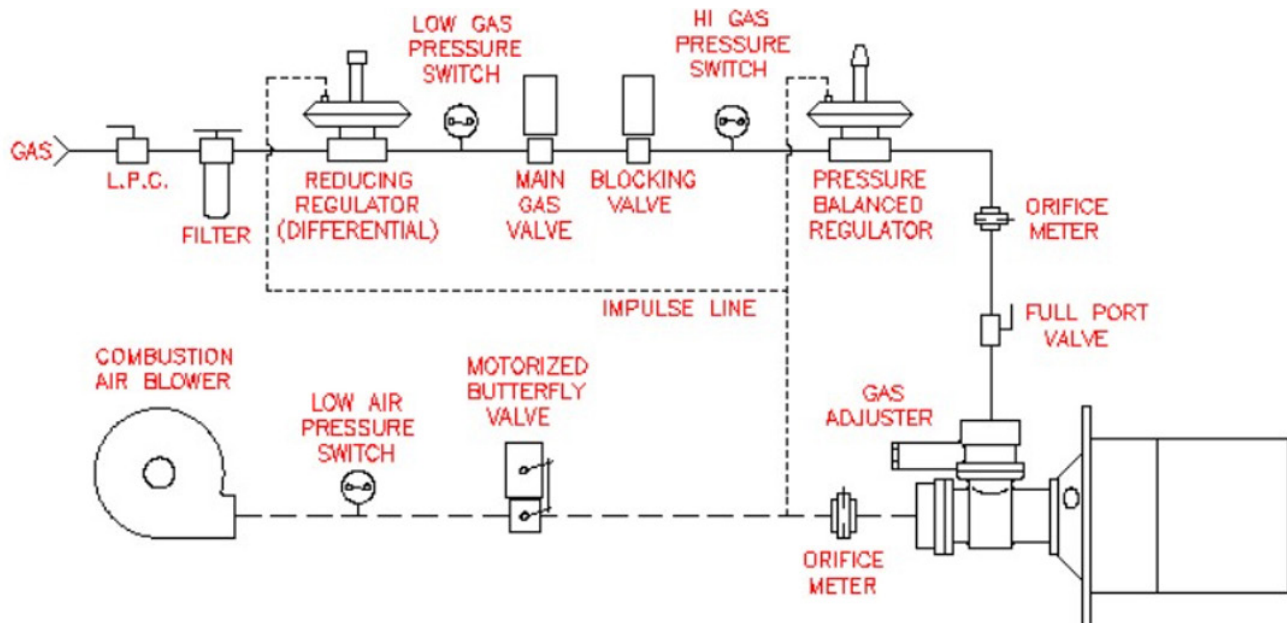


Burners Nozzle Mix Multiple Tunnel

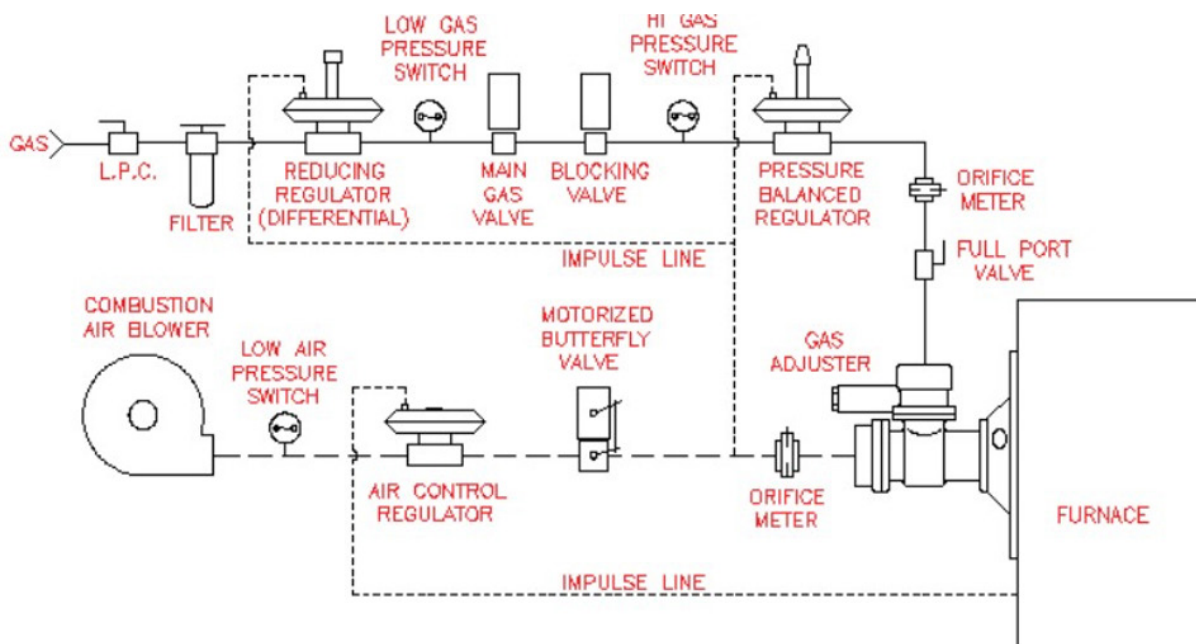


NM Nozzle-Mix Burner

Back Pressure Firing



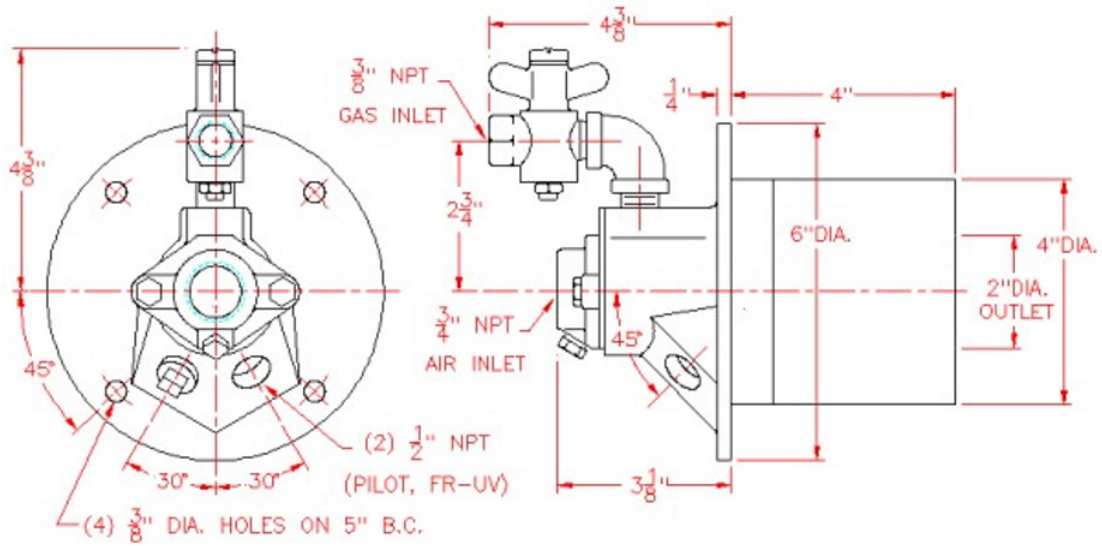
Back Pressure Firing With Air Regulation



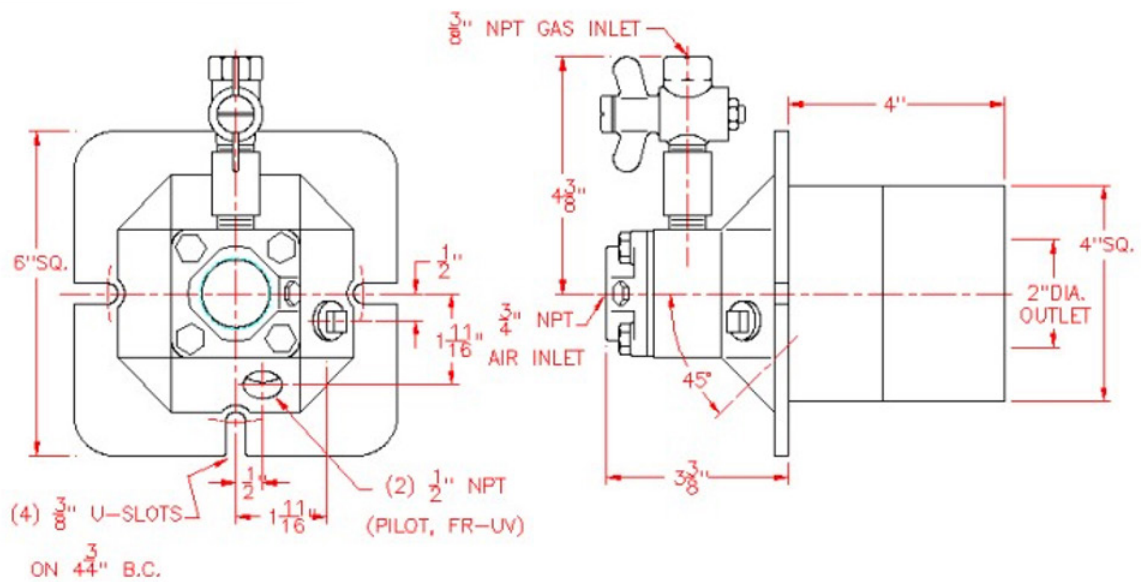
Data Sheet

NM Nozzle-Mix Burner

101 NM - GA-R



101 NM - GA-S

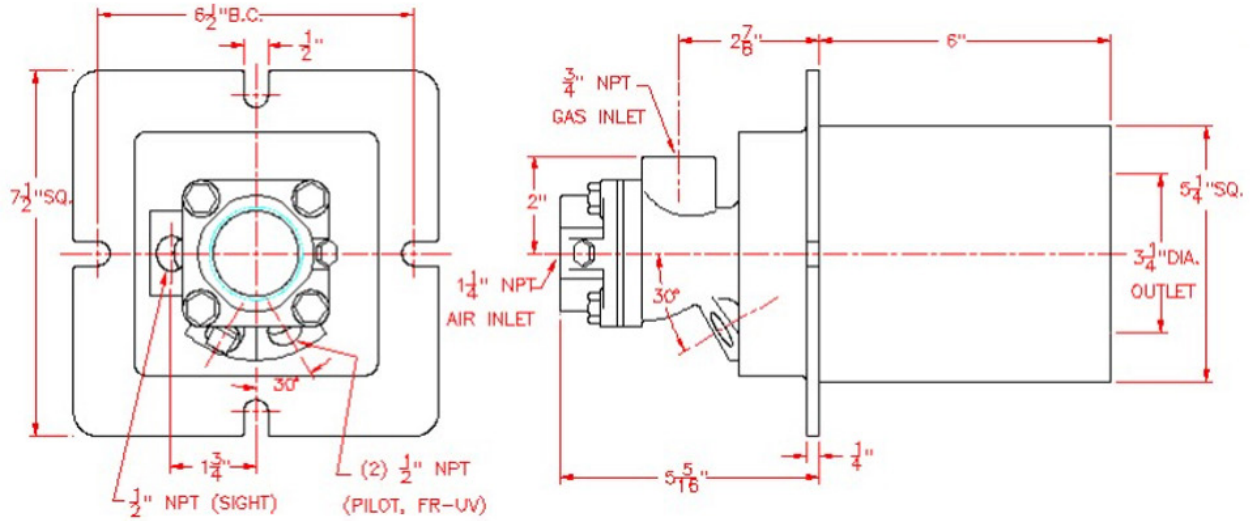


The Heat Technology Company™

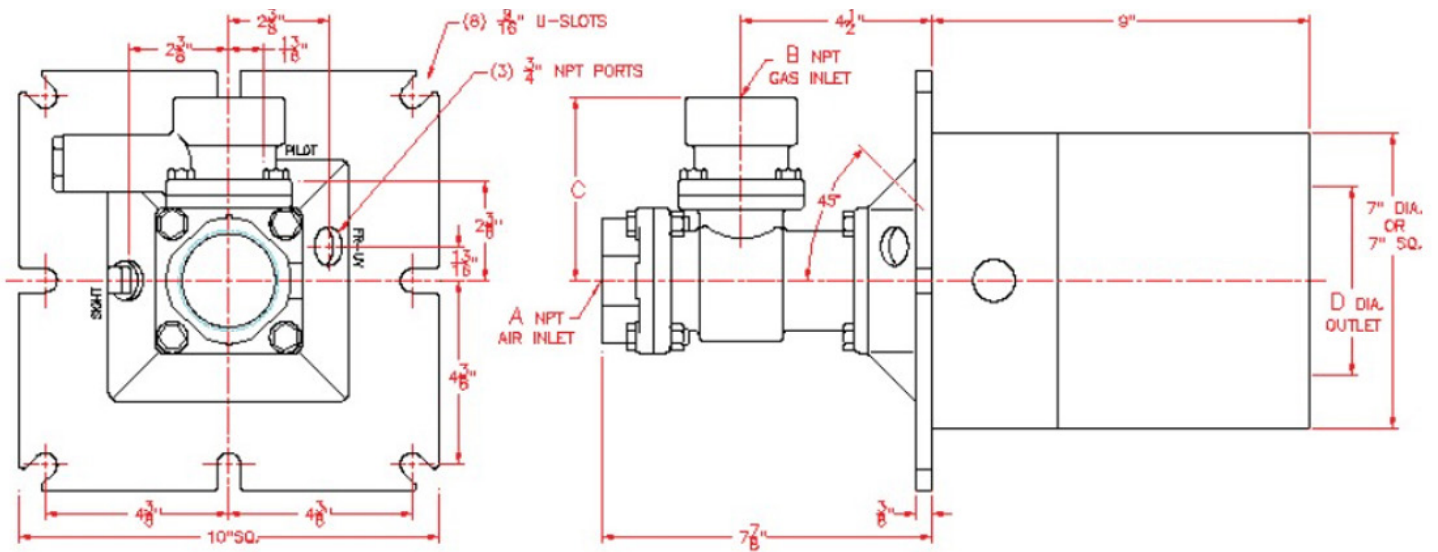
Data Sheet

NM Nozzle-Mix Burner

201 NM - S



NM Burner Dimensions



Model Number	A Air Inlet	B Gas Inlet	C	D
301 NM-F-R 301 NM-F-S	1-1/2	1	2-3/4	4-1/4
301 NM-GA-R 301 NM-GA-S	1-1/2	1	3-3/4	4-1/4
601 NM-F-R 601 NM-F-S	2	1-1/4	3-1/4	4-1/2
601 NM-GA-R 601 NM-GA-S	2	1-1/4	4-1/4	4-1/2

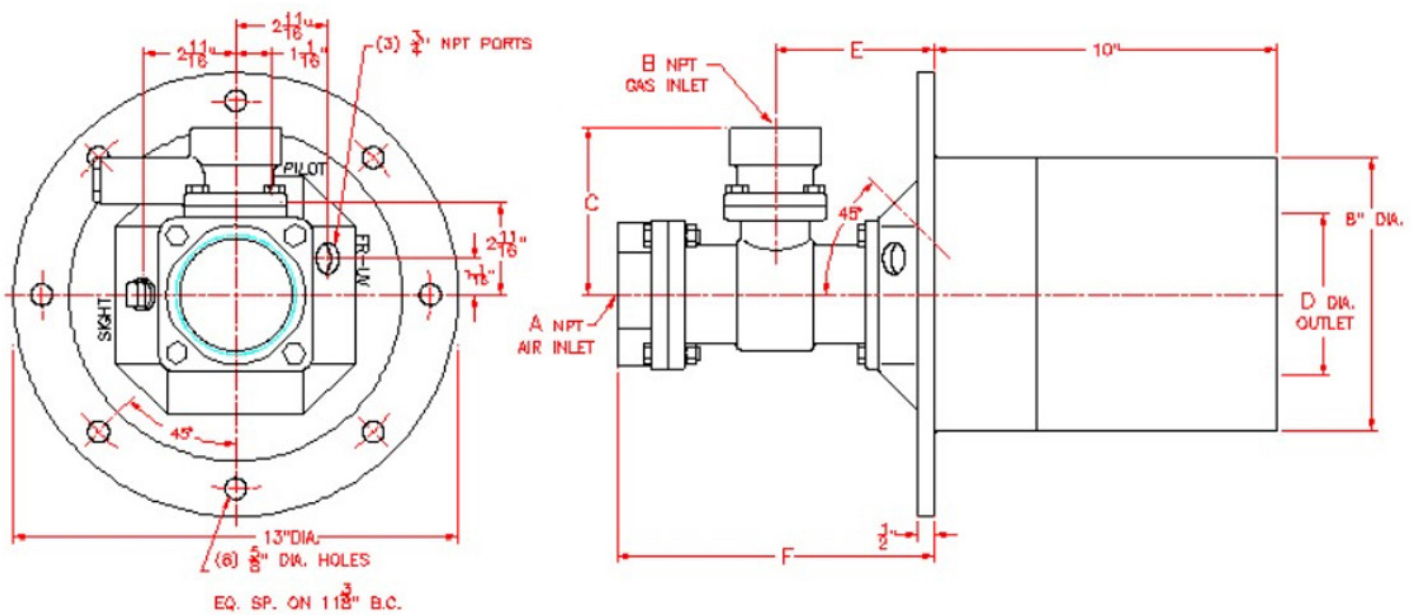


Data Sheet

NM Nozzle-Mix Burner

Model Number	A Air Inlet	B Gas Inlet	C	D	D	D
1001 NM-F-R 1001 NM-F-S	3	1-1/4	3-3/4	4-3/4	4-5/8	9-1/4
1001 NM-GA-R 1001 NM-GA-S	3	1-1/4	4-7/8	4-3/4	4-5/8	9-1/4
1501 NM-F-R 1501 NM-F-S	3	2	3-3/4	5	5-1/2	10-1/8
1501 NM-GA-R	3	1-1/2	5-1/4	5	5-1/2	10-1/8

1001NM & 1501 NM Round

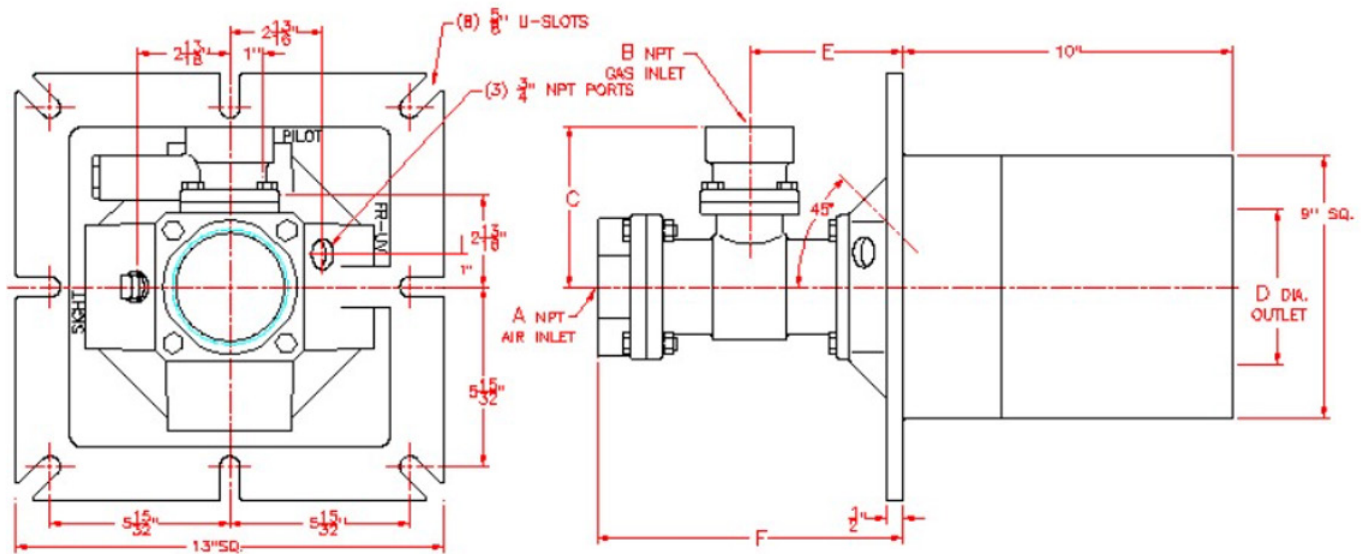


The Heat Technology Company™

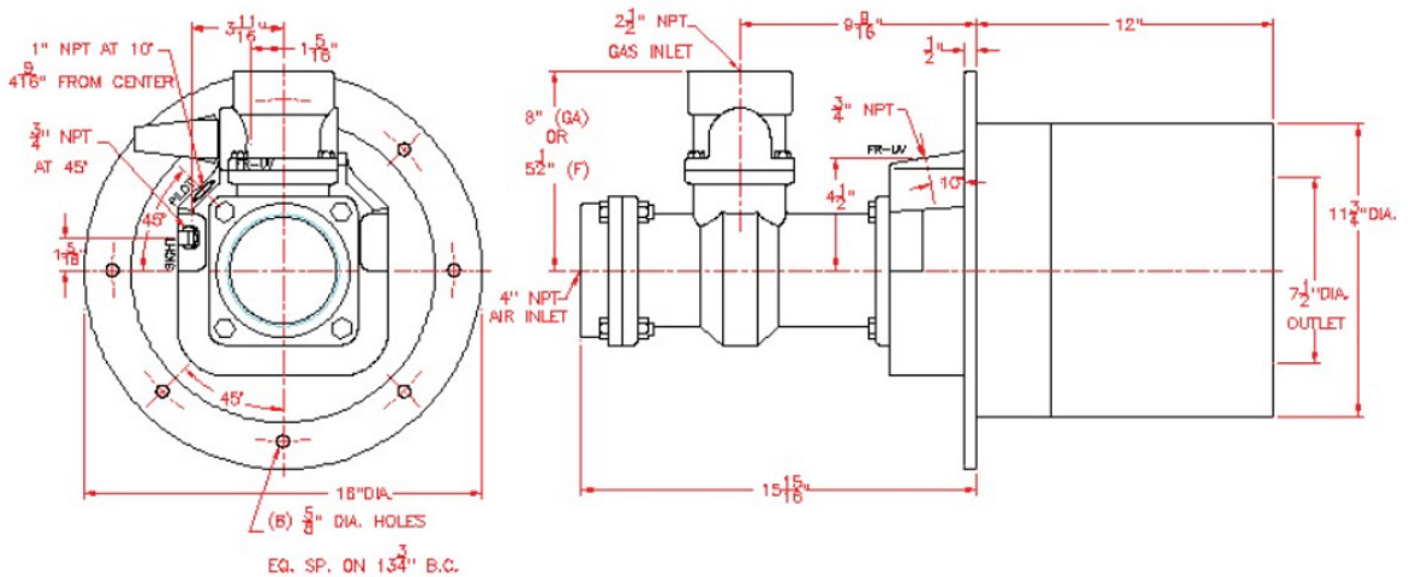
Data Sheet

NM Nozzle-Mix Burner

1001NM & 1501 NM Square



2501 NM

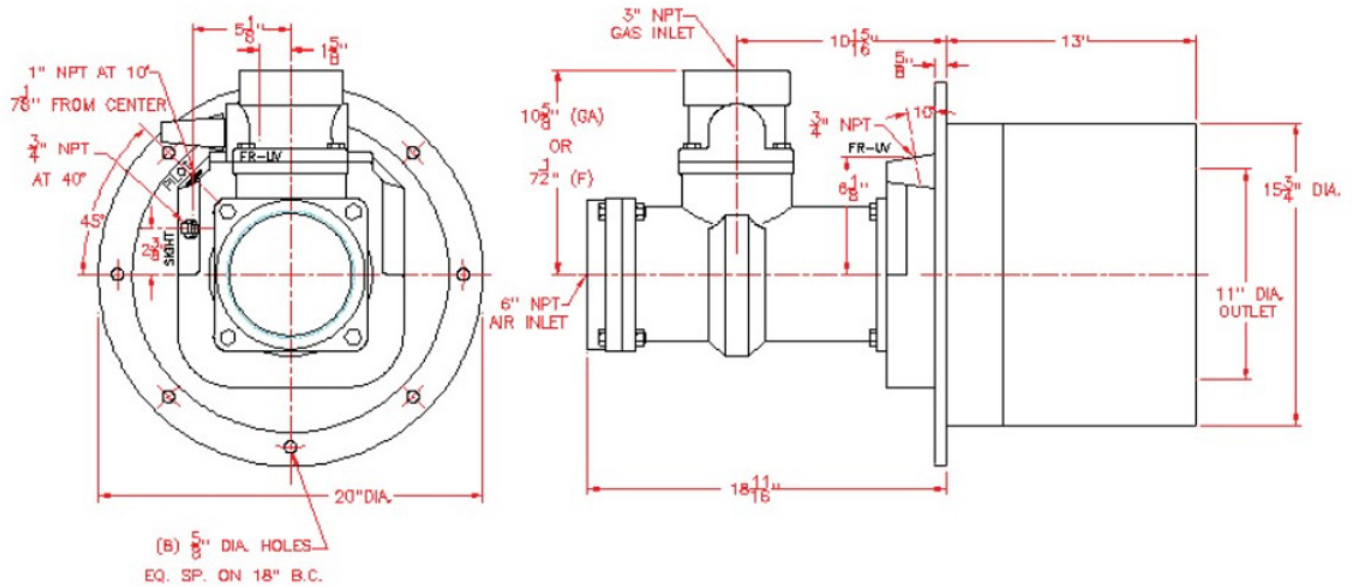


The Heat Technology Company™

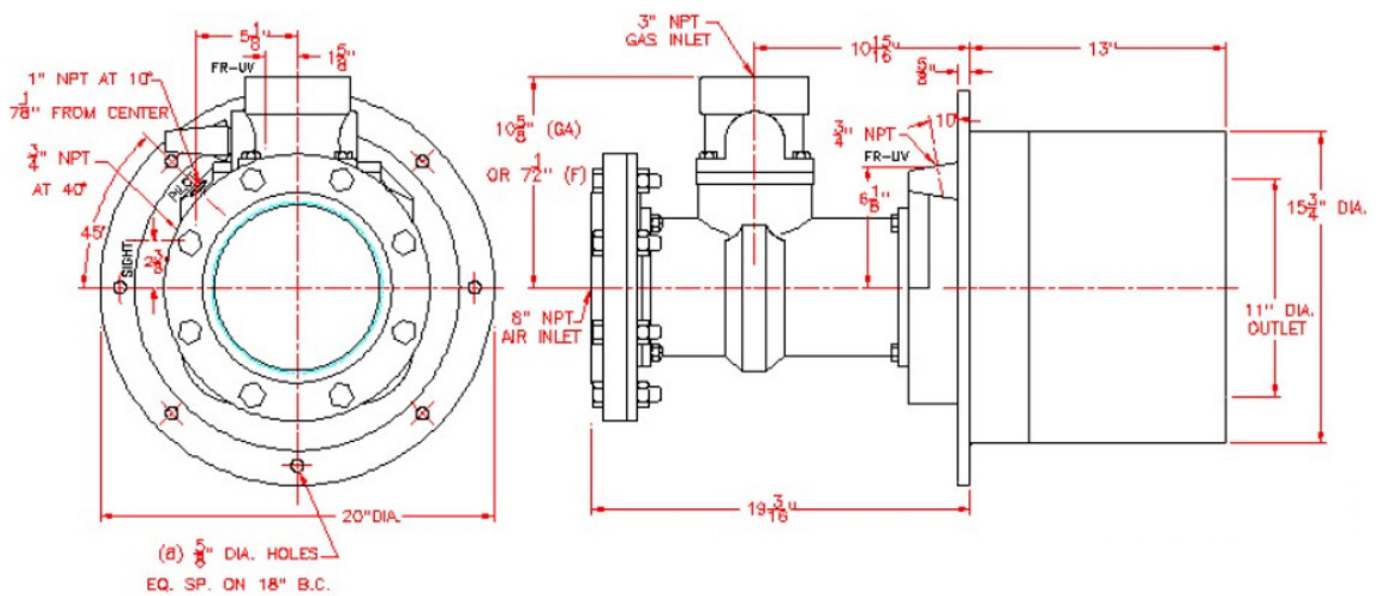
Data Sheet

NM Nozzle-Mix Burner

4001 NM



6001 NM & 8001 NM

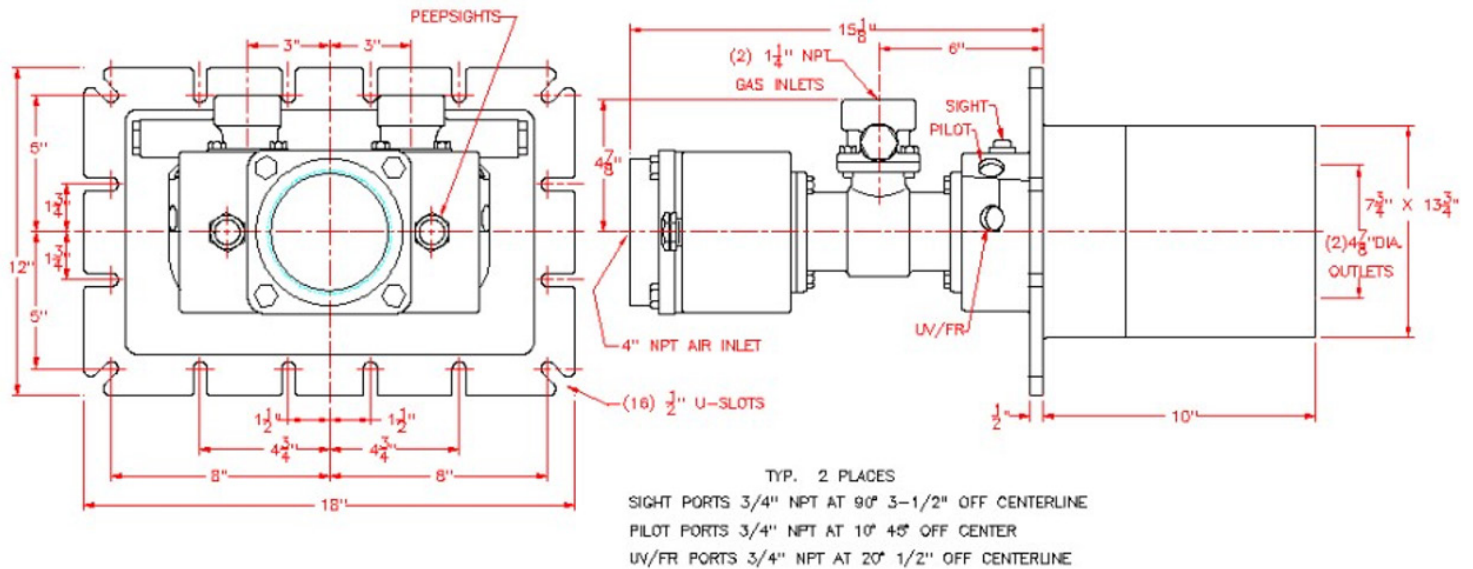


The Heat Technology Company™

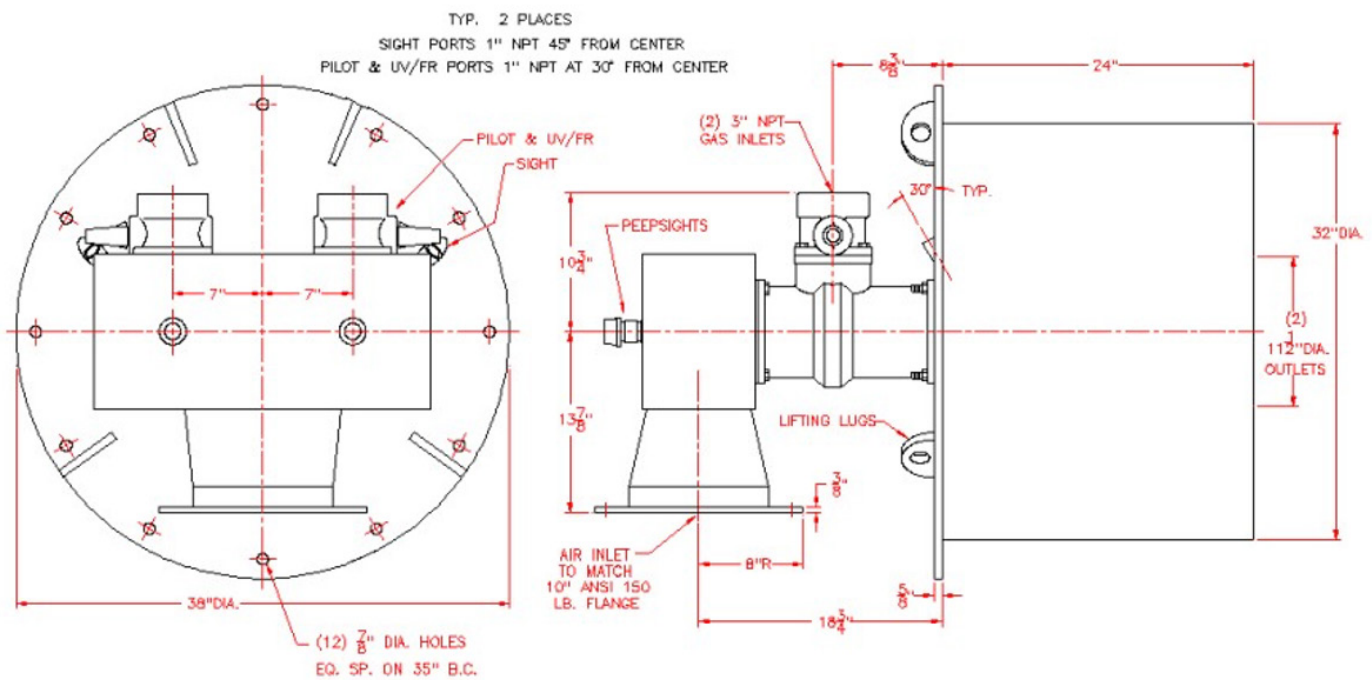
Data Sheet

NM Nozzle-Mix Burner

2002 NM



12002 NM & 16002 NM

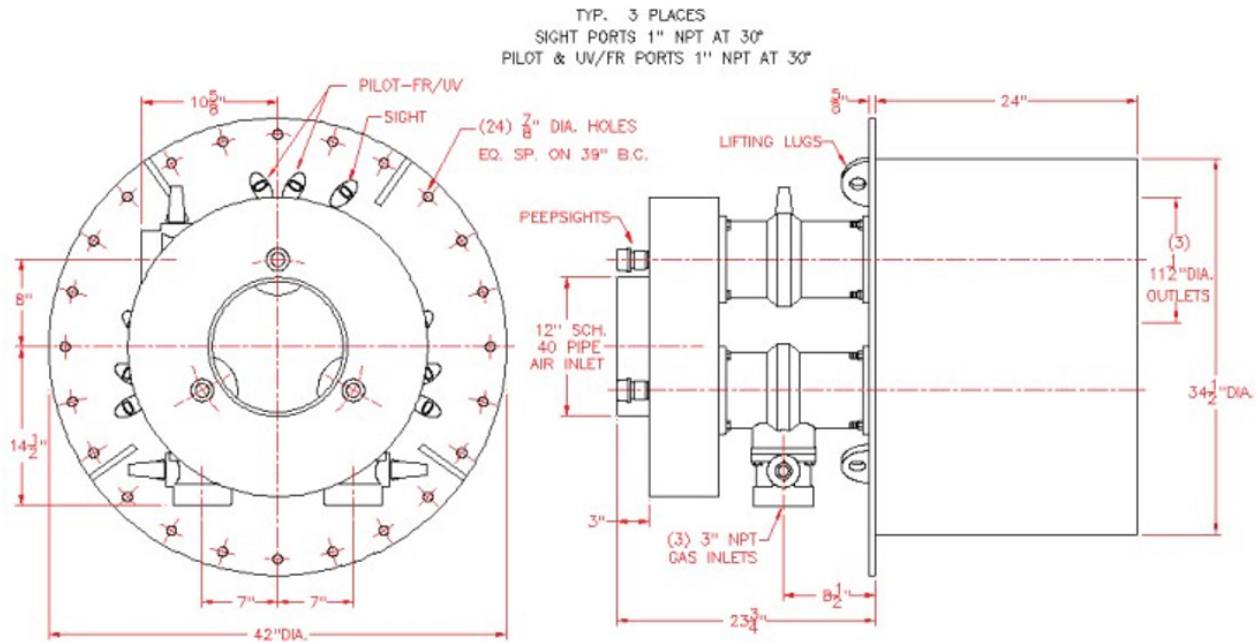


The Heat Technology Company™

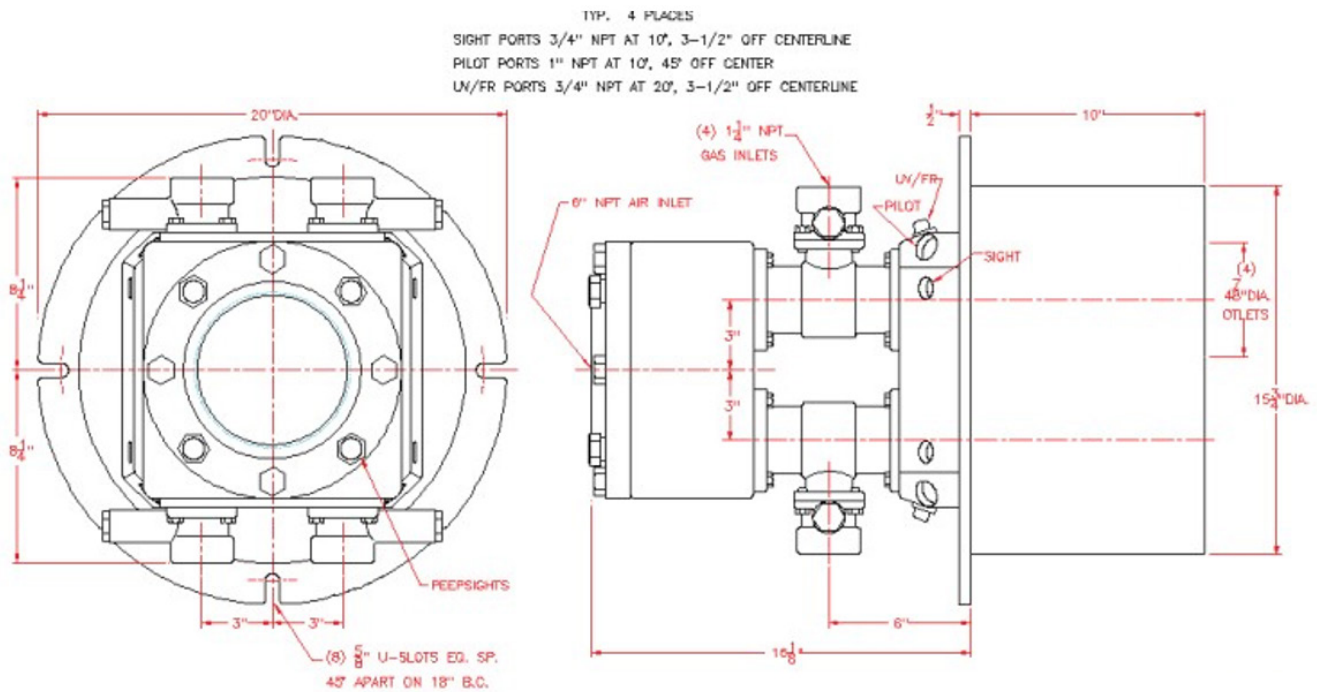
Data Sheet

NM Nozzle-Mix Burner

18003 NM & 24003 NM



4004 NM

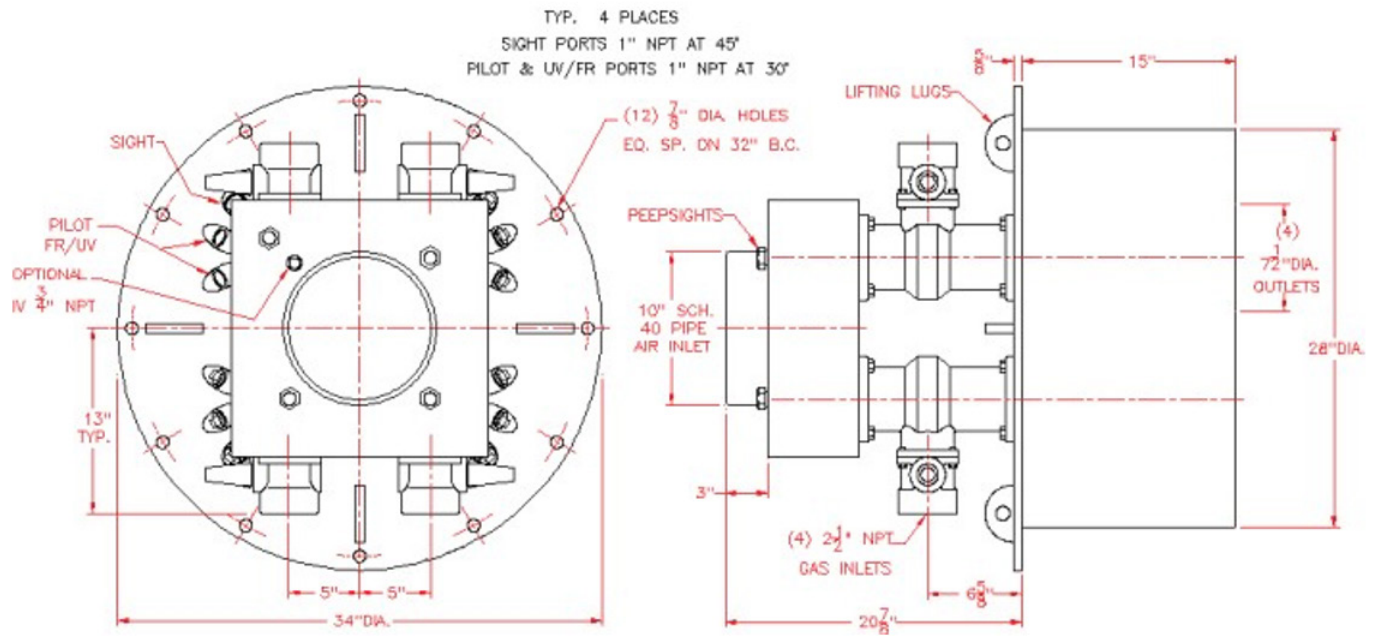


The Heat Technology Company™

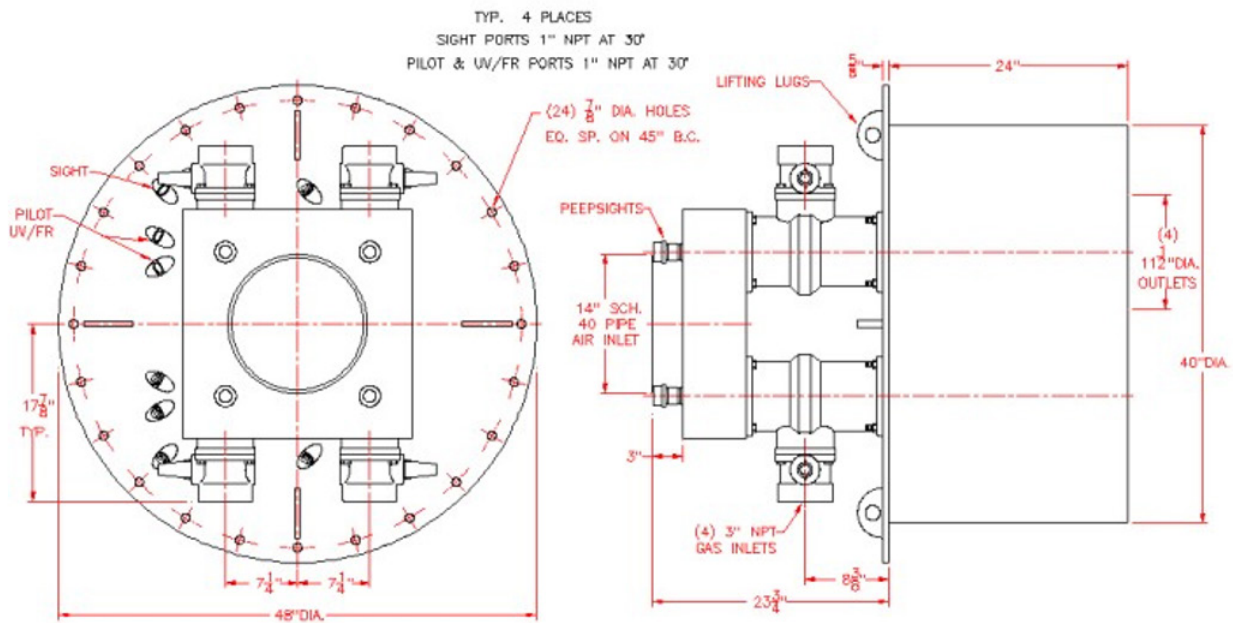
Data Sheet

NM Nozzle-Mix Burner

10004 NM



32004 NM

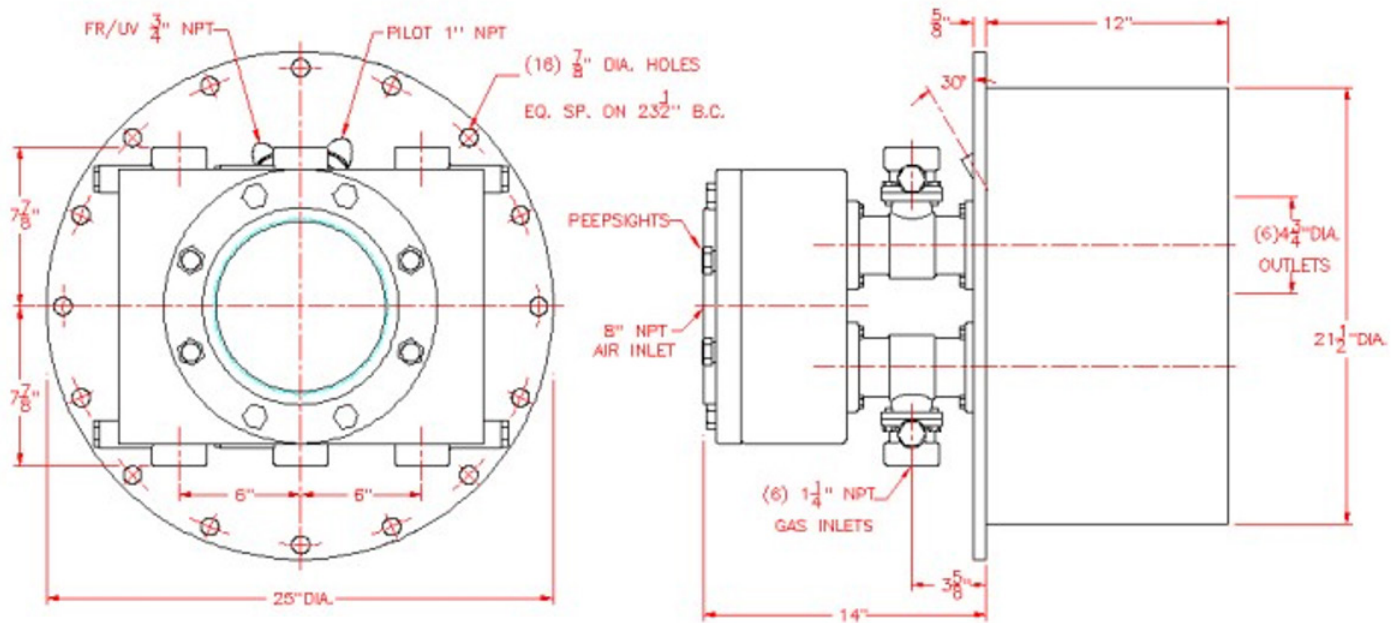


The Heat Technology Company™

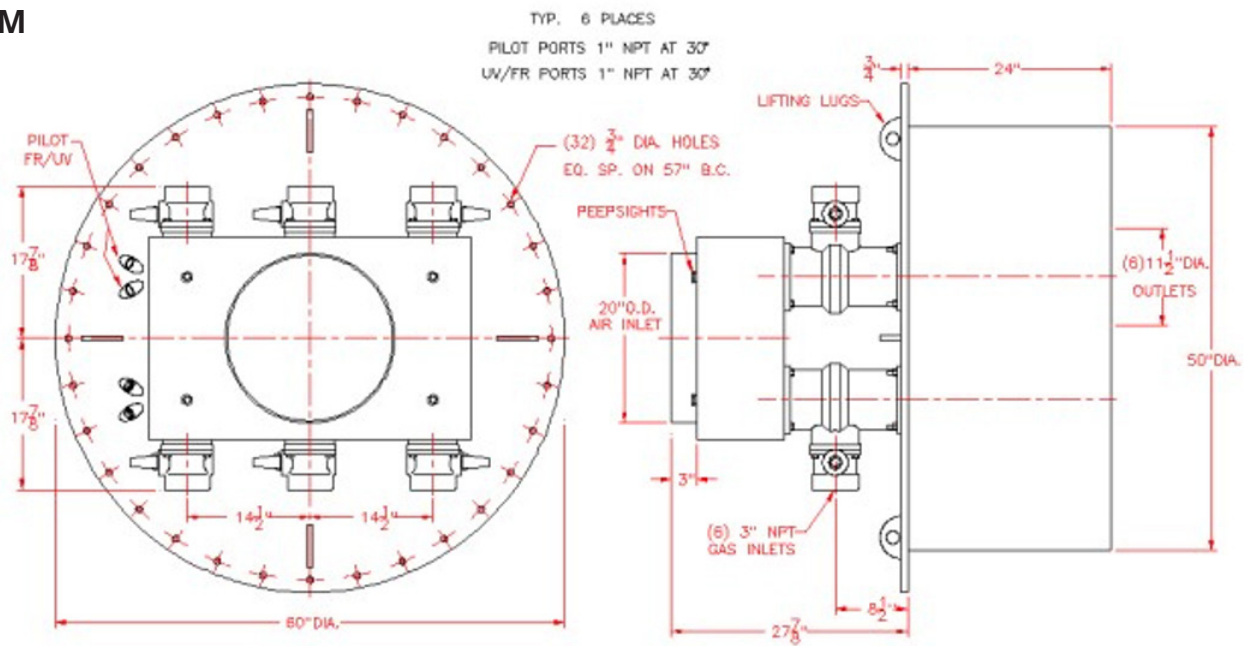
Data Sheet

NM Nozzle-Mix Burner

6006 NM



48006 NM



The Heat Technology Company™

Selas TFR Package Burners

Burner Weights

Model Number	Round		Square	
	Lbs.	Kgs.	2 oz.	4 oz. ²
101NM	13.5	6.14	14	6.36
201NM	-	-	21	9.55
301NM	45.0	20.45	50	22.73
601NM	45.0	32.27	100	22.73
1001NM	71.0	31.82	95	45.45
1501NM	70.0	71.82	95	43.18
2501NM	158.0	71.82	-	-
4001NM	260.0	118.18	-	-
6001NM	330.0	150.00	-	-
8001NM	330.0	150.00	-	-
2002NM	-	-	148	67.27
4004NM	300.0	136.36	-	-
6006 NM	520.0	236.36	-	-
10004 NM	885.0	402.27	-	-
12002 NM	1860.0	845.45	-	-
16002 NM	1860.0	845.45	-	-
18003 NM	1960.0	890.91	-	-
24003 NM	1990.0	904.55	-	-
32004 NM	2290.0	1040.91	-	-
48006 NM	2290.0	1327.27	-	-



SCAN FOR MORE INFORMATION



The Heat Technology Company™